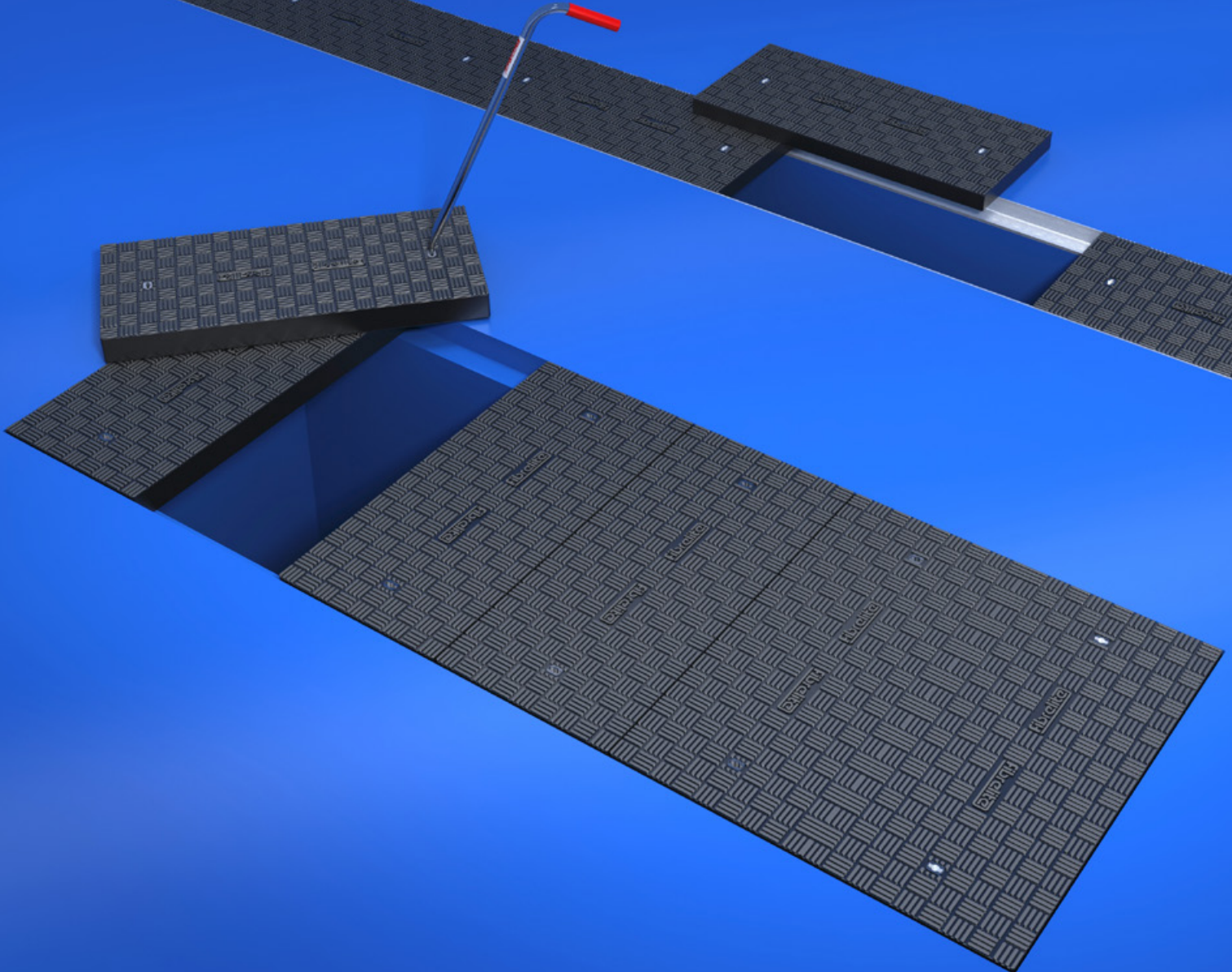


**SAFE**  
ALTERNATIVE  
TO METAL AND  
CONCRETE



## GRP Composite Trench Covers

Lightweight for easy and safe manual removal, without compromising on strength

- RETAIL PETROLEUM
- INDUSTRIAL COVERS
- TRENCH COVERS**
- STEAM COVERS

#coveringtheworld



# Modular GRP composite trench covers to cover positions where ease of access and structural performance are critical

## At the forefront of quality and innovation

Every Fibrelite trench cover is manufactured using hightechnology RTM production methods to create a highly engineered, monolithic composite product. Fibrelite has been at the forefront of glass reinforced plastic (GRP) composite technology since 1980 and was the very first company to design and manufacture composite covers for any application. The aim was to combat the health and safety issues associated with the removal and replacement of traditional heavy metal covers. Fibrelite has established a global reputation for high quality products and superior after sales service. The company has held accreditation to both the ISO quality standard and British Standards Kitemark since 1998.

Composites have always been seen as a high cost alternative to traditional metal products. However, with Fibrelite's technological advances in the manufacturing process, the development of our A15 and B125 trench covers and rising metal prices, composite can now compete head-to-head with the likes of cast iron.

## Lightweight strong and safe

Fibrelite's composite trench covers are designed as a 'fit and forget' product for civil engineering situations. The maintenance free trench covers are perfect for covering large areas, gullies, trenches and ducts where occasional or frequent access may be required.

Covers can be installed on a pre-laid concrete rebate or our modular aluminium frame system which is self-keying into surrounding concrete.



**Composite is the perfect alternative to crumbling concrete and heavy metal covers**

## For industrial applications

Suitable for all industries including energy and utilities, water and wastewater treatment, ports, docks, public works, arenas and stadiums, rail, retail and commercial developments. No other covering system matches it's easy lift, skid resistant or load carrying properties.

## Easy safe lifting and replacement

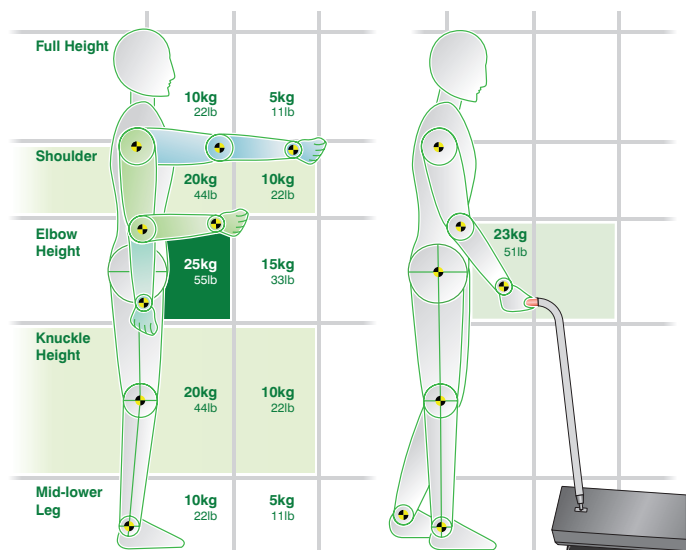
Fibrelite's composite trench covers are proven to be ergonomically safe for men and women to remove and replace. The design incorporates two lifting points for our specially designed FL7 lifting aids. These allow operators to remove the cover without trapping fingers or bending over thus maximising the safety of the lifting technique. The weight is kept close to the body preventing back injury; one of the main causes of absence from work and personal injury claims. The charts below show that the safest place to lift or pull a load is close to the body at waist height.



Dangerous lifting technique without Fibrelite lifting aid.



Safe lifting technique with Fibrelite lifting aid.



The Health & Safety Executive recommended load moving capabilities in relation to weight and position.

Fibrelite lifting method with a 1m (40") long C250 load rated trench cover. Weights are halved with a two person lift.

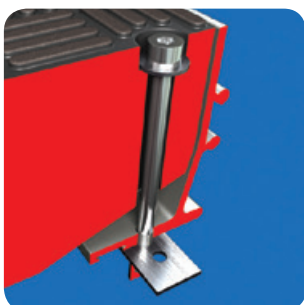


Load ratings  
from 1.5 to 90  
tonnes

## Benefits in summary

- Load ratings from A15 to F900 (BS EN 124)
- Wide range of sizes, colours and shapes
- Unaffected by underground gases and most chemicals
- Will not corrode, crack or crumble
- Excellent insulator against heat
- Easy and safe manual removal
- Lifting aid eliminates back injury and crushed fingers
- Eliminates risk of theft due to no resale value to the scrap market
- Incredibly strong monolithic structure that will not delaminate
- Treads incorporate a specialised anti-slip material equivalent to modern high grade road surface
- Perfect for access to drains, electrical ducts and underground pipework
- Range of UV stable colours available that will not flake or crack
- Cover marking/customisation available

### Security restraints available



### Out with the old

The increased demand for composites is mainly due to the heavy, crumbling and failing traditional materials such as metal and concrete. By using lighter materials, operational injuries are prevented, work sites are made safer and ease of installation and maintenance is made available to utility workers and contractors.

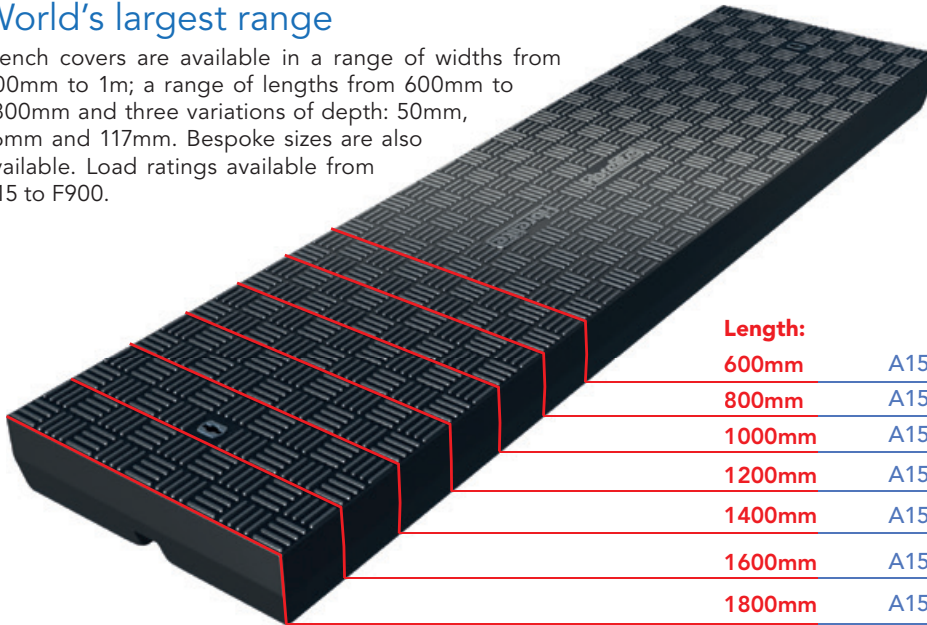


## World's largest range

Trench covers are available in a range of widths from 300mm to 1m; a range of lengths from 600mm to 1800mm and three variations of depth: 50mm, 76mm and 117mm. Bespoke sizes are also available. Load ratings available from A15 to F900.

### Maximum Load:

<b>A15</b>	3,400 lbs / 1.5 tonnes
<b>B125</b>	28,000 lbs / 12.58 tonnes
<b>C250</b>	56,000 lbs / 25 tonnes
<b>D400</b>	90,000 lbs / 40 tonnes
<b>E600</b>	135,000 lbs / 60 tonnes
<b>F900</b>	202,000 lbs / 90 tonnes

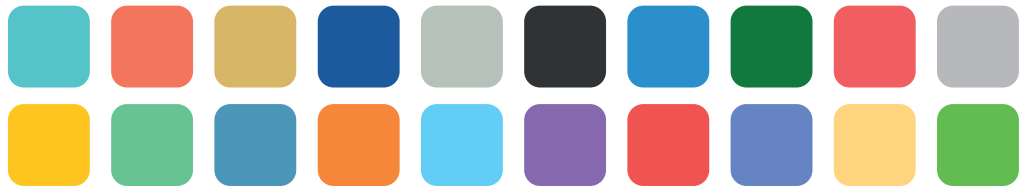


### Length:

<b>600mm</b>	A15	B125	C250	D400	E600	F900
<b>800mm</b>	A15	B125	C250	D400	E600	F900
<b>1000mm</b>	A15	B125	C250	D400	E600	
<b>1200mm</b>	A15	B125	C250	D400		
<b>1400mm</b>	A15	B125	C250	D400		
<b>1600mm</b>	A15	B125	C250	D400		
<b>1800mm</b>	A15	B125	C250			

## Custom colours

Covers can be moulded in virtually any colour or colour combination and as the pigment is added into the resin during manufacture there are no problems with the colour scratching or fading over time.



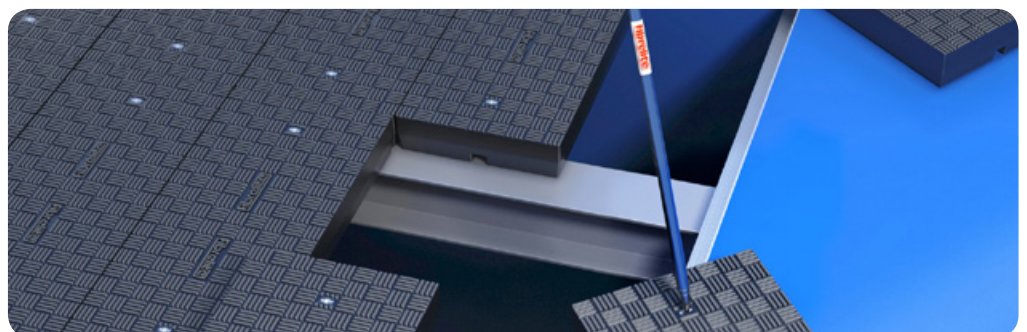
## Custom logos

It is also possible to permanently mould any marking, including brand logos, into the cover's upper surface in single or multiple colours.



## Structural flooring

For larger areas additional support beams can be installed to extend the covering area. Various structural flooring configurations are available.





## Load ratings from A15 to F900

### Light to mid duty



#### Super light duty - A15

Capable of withstanding loads of up to 1.5 tonnes

For use in areas where only pedestrians have access.



#### Medium light duty

Capable of withstanding loads of up to 5 tonnes

For use in raised curb locations where light vehicular access is a possibility.



#### Light duty - B125

Capable of withstanding loads of up to 12.5 tonnes

For use in car parking lots and pedestrian areas where only occasional vehicular access is likely.



#### Standard duty - C250

Capable of withstanding loads of up to 25 tonnes

For use in car parks, forecourts, industrial sites and areas with slow moving traffic.

### Heavy duty



#### Heavy duty - D400

Capable of withstanding loads of up to 40 tonnes

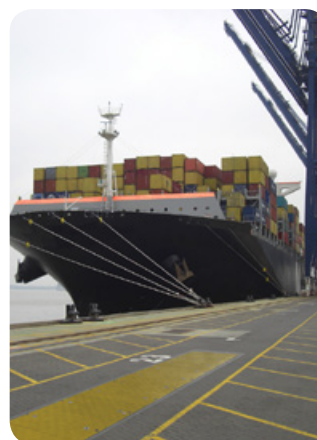
For use in areas where cars and lorries have access, including carriage ways, hard shoulders and pedestrian areas.



#### Super heavy duty - E600

Capable of withstanding loads of up to 60 tonnes

For use in areas where high wheel loads are imposed such as loading areas or docks.



#### Extreme heavy duty - F900

Capable of withstanding loads of up to 90 tonnes

For use in areas where extremely high wheel loads are imposed such as docks.

**Solution to the metal theft epidemic as composite has no re-sale value to the scrap market**

### Technical resources

Each product is fully supported with dimensional product drawings and installation instructions. To access this information please contact Fibrelite directly or log on to our website at [www.fibrelite.com](http://www.fibrelite.com)

### Installation

Performance of Fibrelite trench covers is dependent on correct installation and installers must follow our product specific installation instructions. For unusual installations, please contact our technical department for advice.

### Fibrelite's commitment

Fibrelite products are manufactured in the UK, US and Malaysia. Fibrelite ensures the strictest control on raw material quality and manufacturing standards. All products are manufactured in accordance with ISO9001:2008. ISO accreditation applies to the UK manufacturing plant.

### Our global sales and support network

Fibrelite was established in 1980 and currently has three manufacturing plants around the world. Our head office and main manufacturing plant is located in England and serves the UK, Europe, Middle East and Africa. America and Canada are serviced by our US plant and sales office based in Smithfield. In 2011, Fibrelite opened a new manufacturing plant in Malaysia to supply products to the Asia Pacific region. Fibrelite has an established global network of distributors to ensure a local Fibrelite representative is available wherever required. Details of your nearest distributor can be found on our website.



### Customer testimonials

#### Theatre

*"Overall I think Fibrelite is a great solution to a difficult design problem for us of achieving both a robust and high load capacity cover to the multicore cables running for stage to control desk whilst maintaining low weight and easy access."*

Jonathan Size, Foster Wilson Architects



Hammersmith Apollo

#### Power Station

*"We were looking for an installation to replace our ageing duct covers. Fibrelite came up with this solution and it is manufactured and sourced locally."*

Paul Ellis, Eggborough Power Station



Eggborough Power Station

If you'd like to stay in touch with all that's happening at Fibrelite then join the conversation on our social media channels. You'll find us on LinkedIn, Twitter, Facebook, Youtube and many more.



KM 40638



FM 37923

ISSUE: 03/06/2015



PART OF



#### UK Office:

Snaygill Industrial Estate, Keighley Road, Skipton, North Yorkshire, BD23 2QR, UK

**Tel:** +44 (0) 1756 799 773 **Fax:** +44 (0) 1756 799 539

**E-mail:** [covers@fibrelite.com](mailto:covers@fibrelite.com)

#### USA Office:

3250 US Highway 70 Business West, Smithfield, NC 27577, USA

**Tel:** +1 919 209 2404 **Fax:** +1 800 421 3297

**E-mail:** [covers@fibrelite.com](mailto:covers@fibrelite.com)

#### Malaysia Office:

Lot 12d, Lrg Tandang B, Sek 51, 46050 Petaling Jaya, Selangor, Malaysia

**Tel:** +60 3 7770 1000 **Fax:** +60 3 7770 1010

**E-mail:** [covers@fibrelite.com](mailto:covers@fibrelite.com)

[www.fibrelite.com](http://www.fibrelite.com)